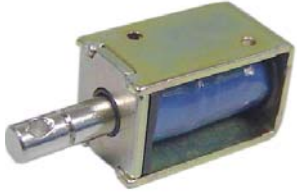


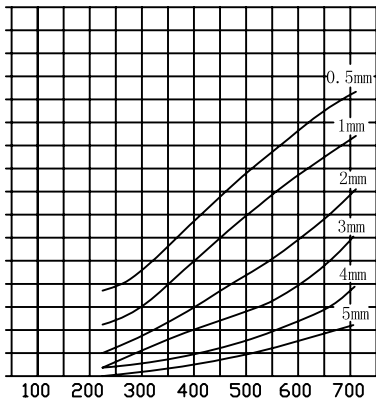
ZHO-0420L/S Open Frame Solenoids

ZHO



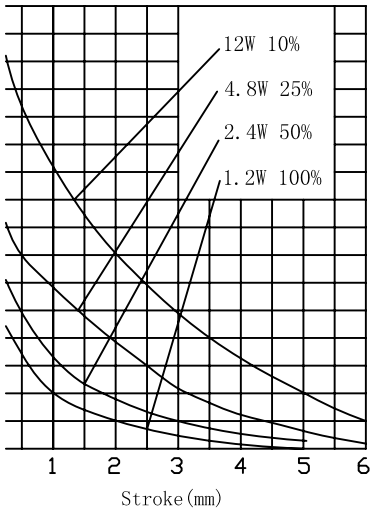
Weight: 12g
保险柜锁, 柜锁, 医疗仪器, 纺织机, 机, 机器人锁等

AMPERE-TURNS Vs FORCE
安匝/吸引力

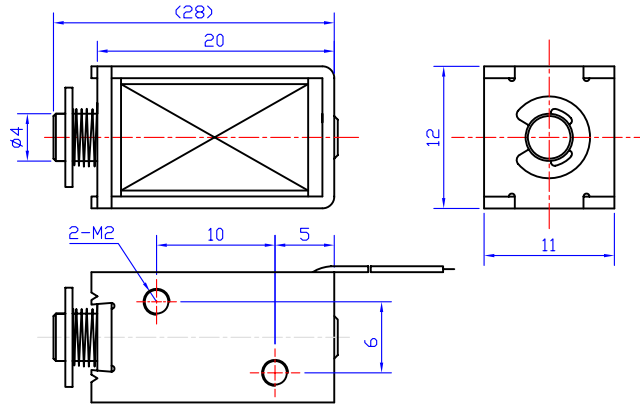


Ampere-turns (AT)

STROKE Vs FORCE
行程/吸引力

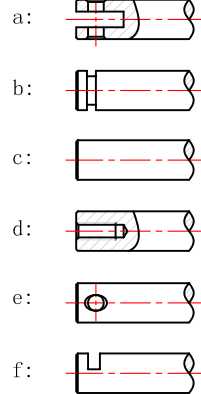


类型: 拉式 TYPE: PULL

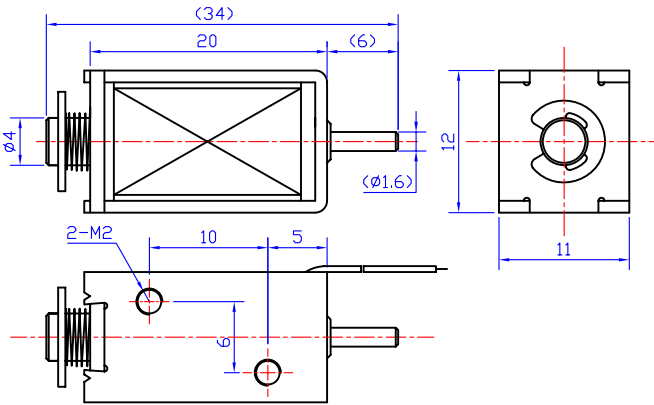


单位:mm Units:mm 通电状态 Shown Energized

滑杆外部与负载连接的典型结构
plunger type:

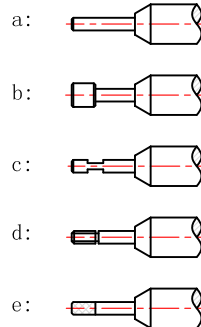


类型: 推式 TYPE: PUSH



单位:mm Units:mm 通电状态 Shown Energized

顶杆外部与负载连接的典型结构
push shaft type:



COIL DATA线圈资料

$\text{Duty cycle (\%)} = \frac{\text{"ON" time}}{\text{"ON" time} + \text{"OFF" time}} \times 100\%$		连续 Continuous	间断 Intermittent			
$\text{工作周期 (\%)} = \frac{\text{工作时间}}{\text{工作时间} + \text{断开时间}} \times 100\%$		100%	50%	25%	10%	
MAX. "on" time in seconds 最大工作时间(秒)		∞	50	18	2	
Watts at 20° 瓦特数(在20°)		1.2	2.4	4.8	12	
Ampere-turns at 20° 安匝值(在20°)		219	309	438	692	
Type no.	Resistance (20°C) Ω ± 10%	No. Turns	VoltS DC 电压			
型号	阻值(Ω) ± 10%	线圈匝数				
ZHO-0420L/S	30	1095	6	8.5	12	19
	120	2190	12	17	24	38
	480	4380	24	34	48	76
	1920	8760	48	68	96	152